

Notes:

These pages include spaces for postmarks listed in Friedemann and the ArGe Kolonien postmark catalog. Spaces are also included for Seepost and MSP postmarks that can be found on stamps of the colony.

There are certain postmarks, particularly Marine-Schiffspost postmarks, that are cataloged because the ship spent time in the colony, but are purely theoretical as no known copies exist on stamps of the colony. Pages are included for these for the sake of completeness, though they can easily be skipped or discarded if you don't want to include a page in your album that will likely never be filled.

As the postmarks are commonly found on stamps of different sizes and/or on piece, no stamp boxes are included. Rather, a large blank space is provided allowing for items of various sizes and quantities.

However, if you would like stamp boxes to match the style of those on the normal GermanStamps.net pages, or if you need any other customizations, please contact me through the "Contact Admin" form that's in the footer of every page on my website.

**NOTE ON PRINTING:** If, when printing, you have the option to print the pages actual size or shrink them to fit the paper, **do not select shrink to fit!** Doing so will shrink all content on the page. The pages should print correctly at actual size, regardless of any warnings your printer might give.

Cheers,

PostmasterGS



# German New Guinea Deutsch-Neuguinea

In the 1850s, German traders first established a foothold on the northern and eastern coasts of New Guinea, as well as on the surrounding smaller islands.

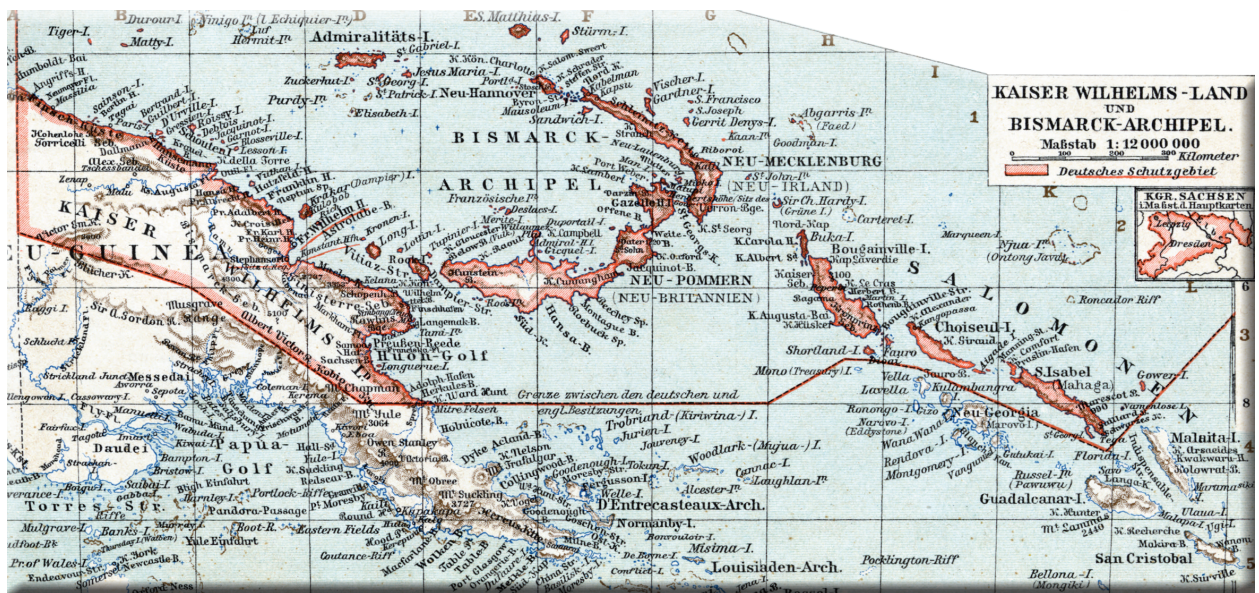
In May 1885, the German government entered into an agreement with the Neu Guinea Compagnie (New Guinea Company), under the terms of which the Company was authorized to acquire further lands as it saw fit. In return, the Company was to expand German influence within the area, and to build and maintain the local governmental institutions.



Flag of the  
German Colonial Office

On 1 April 1899, the German government formally took control of the area formerly administered by the Neu Guinea Compagnie, as it had become cost prohibitive for the privately funded Company to develop and maintain the colony. An Imperial Governor was appointed to govern the colony, and in a reorganization of the German holdings in the South and Central Pacific, administration of the German colonies in the Carolines (1899), Marianas (1899), and Marshalls (1906) was eventually transferred to the Imperial Governor of German New Guinea.

German New Guinea was quickly conquered by Australian forces at the outbreak of WWI, and as with all of Germany's colonial possessions at the time, it was not returned to German control following the war. Instead, it became a League of Nations Protectorate under Australian control.



# German New Guinea Deutsch-Neuguinea



## Postmarks

### Berlinhafen

#### Post Office Information

Opened: 22 May 1898

Renamed Eitape: 1 October 1912



#### Catalog:

- Friedemann 1
- ArGe Kolonien BERLINHAFEN D-N-G

#### Dates of Use:

- 22 May 1898 to 30 September 1912

#### Notes:

- Blue ink in January 1912
- Month "II" instead of "2" in February 1908

# German New Guinea Deutsch-Neuguinea



## Postmarks

Buka

### Post Office Information

Opened: 26 July 1913  
Closed: January 1915



### Catalog:

- Friedemann 2
- ArGe Kolonien BUKA (D-NG)

### Dates of Use:

- 26 January 1913 to January 1915

# German New Guinea Deutsch-Neuguinea



## Postmarks

### Deulon

#### Post Office Information

Opened: 1 January 1914

Closed: 29 September 1914



#### Catalog:

- Friedemann 3
- ArGe Kolonien DEULON (D-NG)

#### Dates of Use:

- 1 January 1914 to 29 September 1914

#### Notes:

- Cancels dated 20 September 1914 are commonly souvenir cancels

# German New Guinea Deutsch-Neuguinea



## Postmarks

### Eitape

#### Post Office Information

Renamed from Berlinhafen: 1 October 1912  
Closed: 4 December 1914



#### Catalog:

- Friedemann 4
- ArGe Kolonien EITAPE (D-NG)

#### Dates of Use:

- 1 October 1912 to 4 December 1914

# German New Guinea Deutsch-Neuguinea



## Postmarks

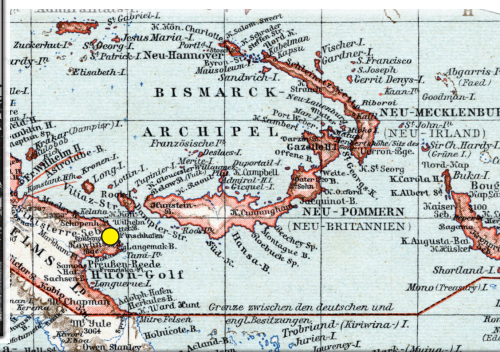
### Finschhafen



#### Post Office Information

Opened: 15 February 1888    Re-Opened: 15 July 1904  
Closed: 19 March 1891        Closed: December 1914

*Finschhafen Post Office, 1888*



#### Catalog:

- Friedemann 5
- ArGe Kolonien FINSCHHAFEN ♦1

#### Dates of Use:

- 15 February 1888 to 19 March 1891

#### Notes:

- Used sporadically at Stephansort in April / October 1891

# German New Guinea Deutsch-Neuguinea



## Postmarks

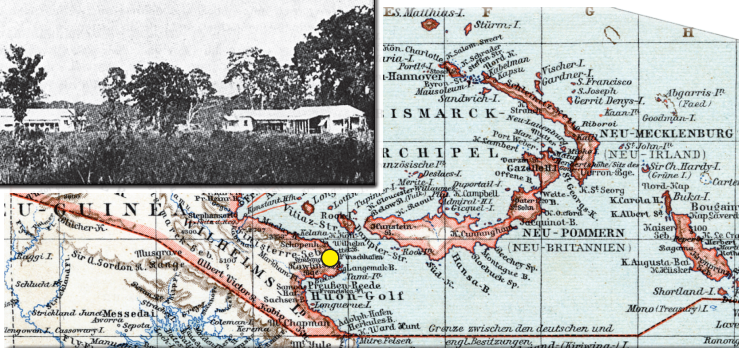
### Finschhafen

#### Post Office Information

Opened: 15 February 1888    Re-Opened: 15 July 1904  
Closed: 19 March 1891        Closed: December 1914



Finschhafen Station and Post Office, 1900



#### Catalog:

- Friedemann 6
- ArGe Kolonien FINSCHHAFEN D-N-G ♦2

#### Dates of Use:

- 15 July 1904 to December 1914

#### Notes:

- With year date "15" handwritten over "13" known only on money orders



# German New Guinea Deutsch-Neuguinea



## Postmarks

### Friedrich-Wilhelmshafen

#### Post Office Information

Opened: 1 March 1892

Closed: Mid-September 1914



#### Catalog:

- Friedemann 7
- ArGe Kolonien FRIEDRICH-WILHELMSHAFEN

#### Dates of Use:

- 17 May 1892 to 31 August 1914

#### Notes:

- Blue ink on 17 May 1892 & in 1909
- Violet ink in 1906
- “1” in year date “01” overwritten by hand with “2” from 1-7 January 1902
- Used in Stephansort from 5 April 1897 to 2 December 1897 due to lack of postmaster in Friedrich-Wilhelmshafen

# German New Guinea Deutsch-Neuguinea



## Postmarks

### Hatzfeldthafen

#### Post Office Information

Opened: 1 April 1888

Closed: 30 September 1891



#### Catalog:

- Friedemann 8
- ArGe Kolonien HATZFELDTHAFEN

#### Dates of Use:

- 1 April 1888 to 30 September 1891

# German New Guinea Deutsch-Neuguinea



## Postmarks

### Herbertshöhe

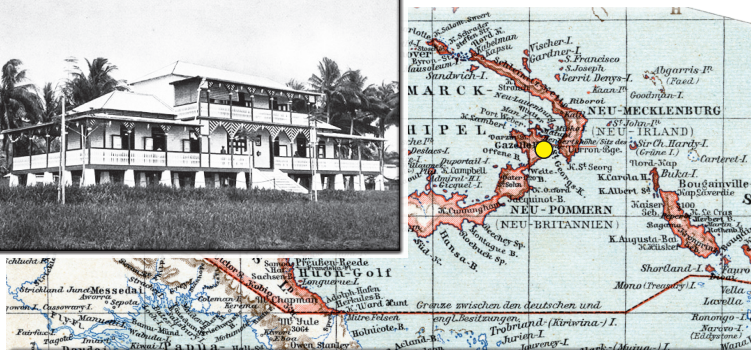
#### Post Office Information

Opened: June 1890

Closed: 10 September 1914



Herbertshöhe Post Office, 1900



#### Catalog:

- Friedemann 9
- ArGe Kolonien HERBERTSHÖH ♦1

#### Dates of Use:

- 7 February 1891 to 22 April 1900

#### Notes:

- Can be found with handwritten "II" instead of "2" as month in February 1897

# German New Guinea Deutsch-Neuguinea



## Postmarks

### Herbertshöhe

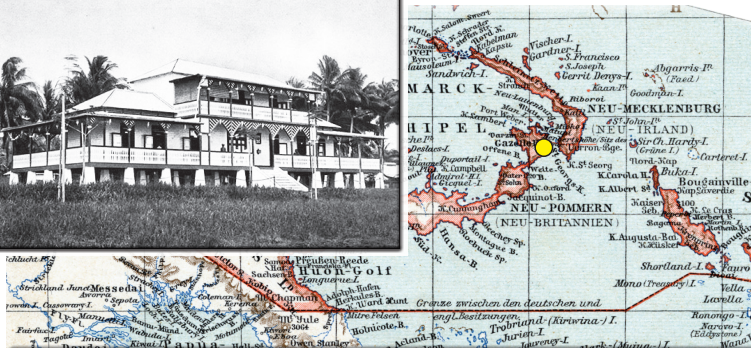
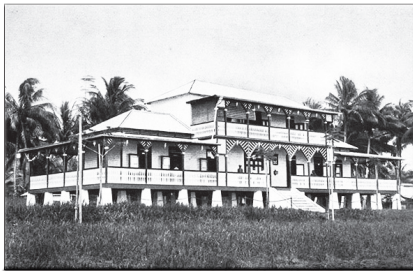
#### Post Office Information

Opened: June 1890

Closed: 10 September 1914



Herbertshöhe Post Office, 1900



#### Catalog:

- Friedemann 10
- ArGe Kolonien HERBERTSHÖHE  
D-N-G ♦2

#### Dates of Use:

- 22 April 1900 to 10 September 1914

#### Notes:

- Blue or violet ink in 1901

# German New Guinea Deutsch-Neuguinea



## Postmarks

Kaewiang

### Post Office Information

Opened: 1 January 1904  
Closed: 17 October 1914



### Catalog:

- Friedemann 11
- ArGe Kolonien KAEWIENG D-N-G

### Dates of Use:

- 1 January 1904 to 17 October 1914

# German New Guinea Deutsch-Neuguinea

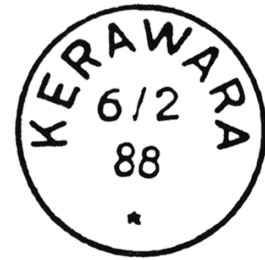


## Postmarks

### Kerawara

#### Post Office Information

Opened: 6 April 1888  
Closed: June 1890



#### Catalog:

- Friedemann 12
- ArGe Kolonien KERAWARA

#### Dates of Use:

- May 1888 to June 1890

#### Notes:

- Due to lack of an "89" slug, 1889 dates can be found with "88" placed horizontally as provisional "89"
- Used in Herbertshöhe, June 1890 to 14 January 1891

# German New Guinea Deutsch-Neuguinea



## Postmarks

### Kieta

#### Post Office Information

Opened: 25 April 1907  
Closed: December 1914



- Catalog:
- Friedemann 13
  - ArGe Kolonien KIETA D-NG

- Dates of Use:
- 25 April 1907 to December 1914

- Notes:
- In January and February 1900, without year date or with "10" hand-changed to "11"

# German New Guinea Deutsch-Neuguinea



## Postmarks

### Konstantinhafen

#### Post Office Information

Opened: 15 May 1888

Closed: 30 September 1891



#### Catalog:

- Friedemann 14
- ArGe Kolonien KONSTANTINHAFEN

#### Dates of Use:

- 15 May 1888 to 30 September 1891



# German New Guinea Deutsch-Neuguinea



## Postmarks

### Manus

#### Post Office Information

Opened: 6 December 1912  
Closed: December 1914



#### Catalog:

- Friedemann 15
- ArGe Kolonien MANUS (D-NG)

#### Dates of Use:

- 6 December 1912 to December 1914

# German New Guinea Deutsch-Neuguinea



## Postmarks

### Maron

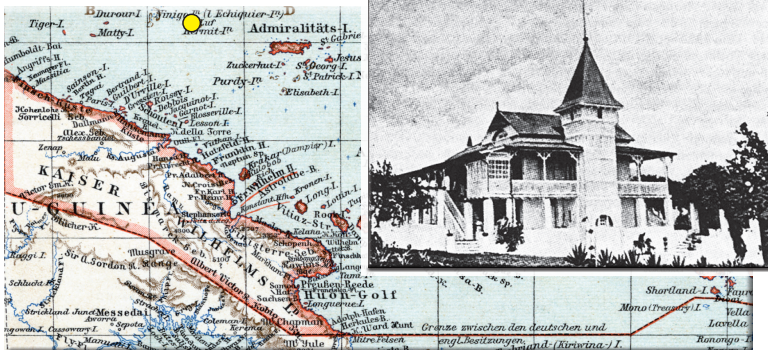
#### Post Office Information

Opened: 1 October 1910

Closed: November 1914



Maron Post Office, 1910



#### Catalog:

- Friedemann 16
- ArGe Kolonien MARON D-NG

#### Dates of Use:

- December 1910 to November 1914

# German New Guinea Deutsch-Neuguinea



## Postmarks

### Matupi



#### Post Office Information

Opened: 1 November 1894  
Closed: 31 January 1906

Matupi Post Office



#### Catalog:

- Friedemann 17
- ArGe Kolonien MATUPI

#### Dates of Use:

- 1 November 1894 to 31 January 1906

#### Notes:

- In early 1895, can be found with year date "94" hand-changed to "95"
- Used in Kerawara, 4 April 1888 to May 1888

# German New Guinea Deutsch-Neuguinea



## Postmarks

Morobe

### Post Office Information

Opened: 20 January 1913  
Closed: 11 January 1915



- Catalog:
- Friedemann 18
  - ArGe Kolonien MOROBE (D-NG)
- Dates of Use:
- 15 January 1913 to 11 January 1915

# German New Guinea Deutsch-Neuguinea



## Postmarks

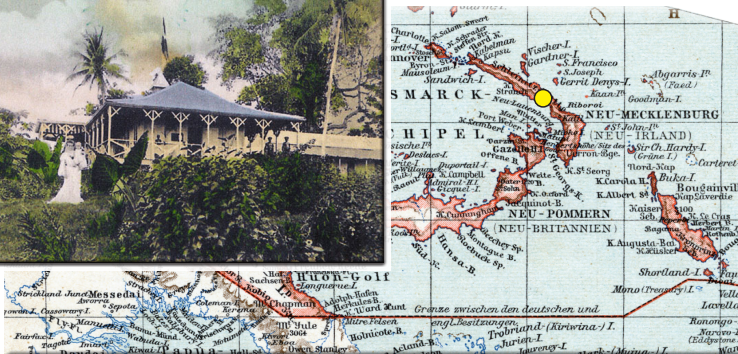
### Namatanai

#### Post Office Information

Opened: 11 September 1911  
Closed: November 1914



#### Namatanai Post Office



#### Catalog:

- Friedemann 19
- ArGe Kolonien NAMATANAI (D-NG)

#### Dates of Use:

- Early December 1911 to November 1914

#### Notes:

- No canceller until December 1911

# German New Guinea Deutsch-Neuguinea



## Postmarks

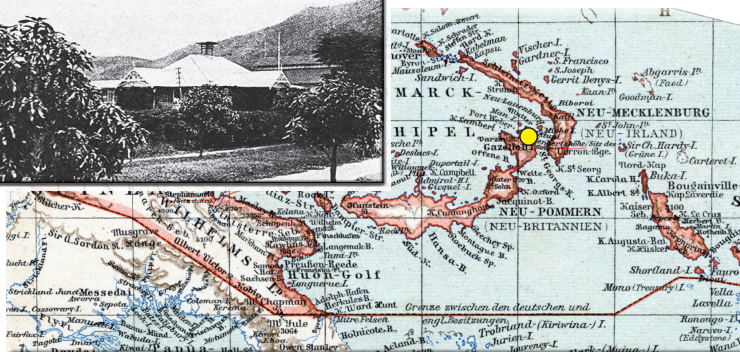
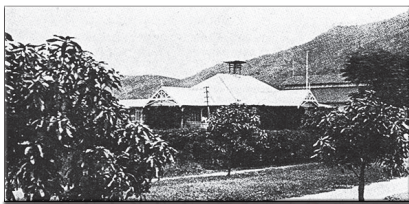
### Rabaul

#### Post Office Information

Renamed from Simpsonhafen: 1 April 1910  
Closed: 11 September 1914



Rabaul Post Office



#### Catalog:

- Friedemann 20
- ArGe Kolonien RABAU D-NG ♦1

#### Dates of Use:

- 1 April 1910 to 11 September 1914

#### Notes:

- Unavailable from 10 April 1913 to September 1913 due to being returned to Germany for repairs

# German New Guinea Deutsch-Neuguinea



## Postmarks

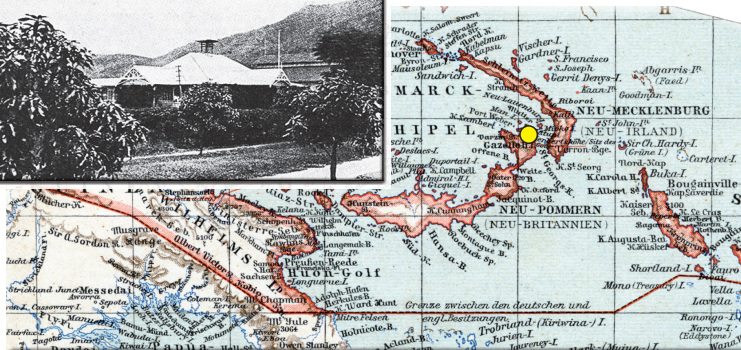
### Rabaul

#### Post Office Information

Renamed from Simpsonhafen: 1 April 1910  
Closed: 11 September 1914



Rabaul Post Office



#### Catalog:

- Friedemann 21
- ArGe Kolonien RABAU a (D-NG) ♦2

#### Dates of Use:

- 6 April 1913 to 11 September 1914

# German New Guinea Deutsch-Neuguinea



## Postmarks

### Simpsonhafen

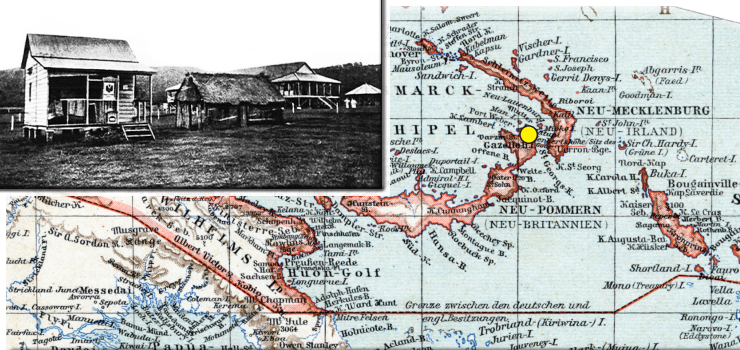
#### Post Office Information

Opened: 1 February 1906

Renamed Rabaul: 1 April 1910



Simpsonhafen Post Office



#### Catalog:

- Friedemann 22
- ArGe Kolonien SIMPSONHAFEN D-N-G

#### Dates of Use:

- 1 February 1906 to 31 March 1910



# German New Guinea Deutsch-Neuguinea



## Postmarks

### Stephansort

#### Post Office Information

Opened: 14 December 1889

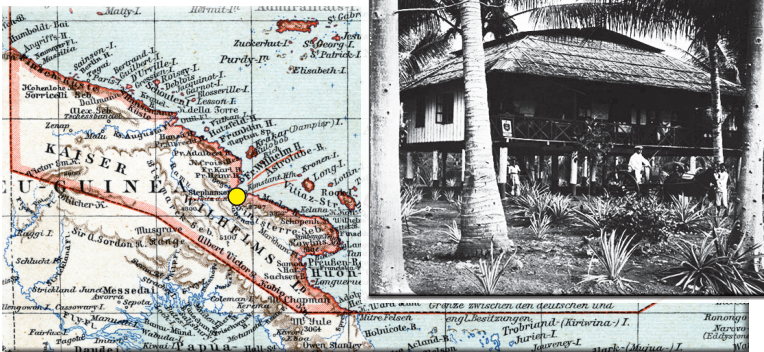
Temporarily Closed: 30 July 1892

Re-Opened: 14 February 1893

Closed: 30 June 1914



Stephansort Post Office, 1890



#### Catalog:

- Friedemann 23
- ArGe Kolonien STEPHANSORT ♦1

#### Dates of Use:

- 14 December 1889 to 30 June 1914

#### Notes:

- In Germany for cleaning and thus unavailable from 20 August 1898 to December 1898
- Occasionally without day and month in 1892 and 1899
- Blue or violet ink in 1910 & 1912

# German New Guinea Deutsch-Neuguinea



## Postmarks

### Stephansort



#### Post Office Information

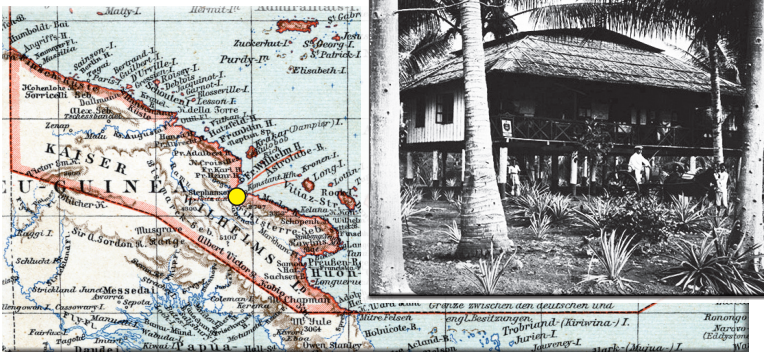
Opened: 14 December 1889

Re-Opened: 14 February 1893

Temporarily Closed: 30 July 1892

Closed: 30 June 1914

*Stephansort Post Office, 1890*



#### Catalog:

- Friedemann 24
- ArGe Kolonien STEPHANSORT ♦2

#### Dates of Use:

- 1 January 1898 to 30 June 1914

# German New Guinea Deutsch-Neuguinea



## Marine-Schiffspost Postmarks

MSP No. 2



### *SMS Bussard*

Type: Unprotected cruiser  
Class: *Bussard* class  
Commissioned: 7 October 1890  
Fate: Decommissioned, 25 October 1912

#### Period of Use on this Ship:

- November 1895 to 20 April 1899

#### Approximate Periods of Use in D-NG:

- May 1896 to July 1896
- December 1897 to February 1898



*SMS Bussard*

# German New Guinea Deutsch-Neuguinea



## Marine-Schiffspost Postmarks

MSP No. 2



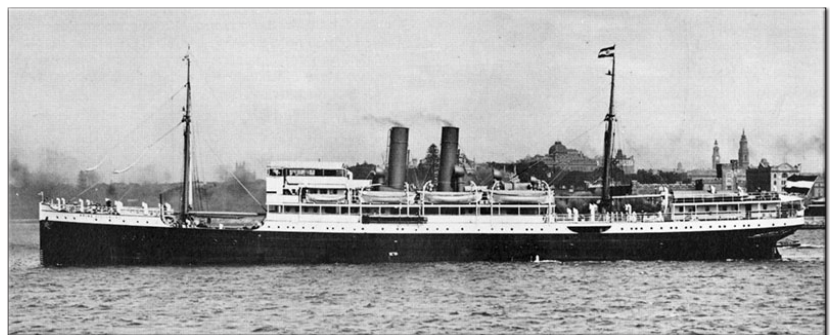
### *Prinz Sigismund*

Type: Scheduled civilian steamer (NDL)  
Launched: 12 May 1903  
Fate: Interned & seized by the British  
in Brisbane, August 1914

Period of Use on this Ship:  
• 8 December 1904 to 5 January 1905

Approximate Period of Use in D-NG:  
• December 1904 to January 1905

Notes:  
• Year date handwritten in January 1905  
• Transporting relief crew then relieved  
crew of *SMS Möwe I*



*Prinz Sigismund*

# German New Guinea Deutsch-Neuguinea



## Marine-Schiffspost Postmarks

MSP No. 3

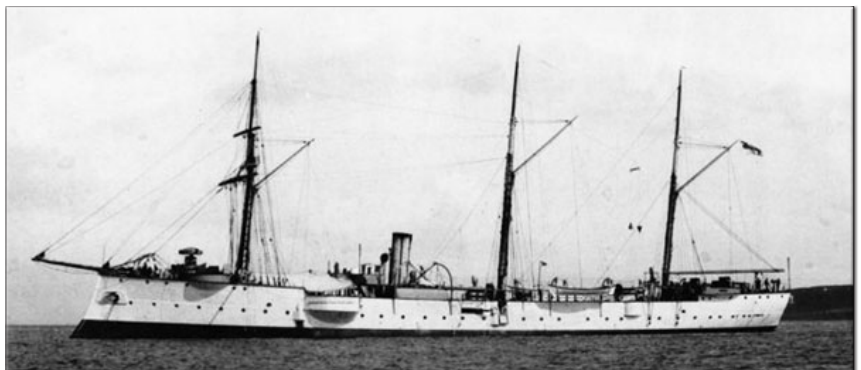


### *SMS Falke*

Type: Unprotected cruiser  
Class: *Bussard* class  
Commissioned: 7 October 1890  
Fate: Decommissioned, 20 April 1907

Period of Use on this Ship:  
• December 1895 to 14 October 1899

Approximate Periods of Use in D-NG:  
• December 1895 to January 1896  
• December 1896 to February 1897  
• August 1897 to September 1897  
• June 1898  
• August 1898 to September 1898



*SMS Falke*

# German New Guinea Deutsch-Neuguinea



## Marine-Schiffspost Postmarks

MSP No. 4



### *Prinz Waldemar*

Type: Scheduled civilian steamer (NDL)

Launched: 3 June 1903

Fate: Interned in Honolulu, 1914;

Seized by the USA, 6 April 1917

Period of Use on this Ship:

- 2 December 1909 to 27 December 1909

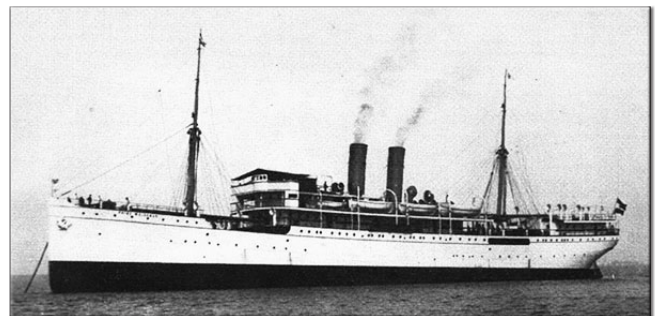
Approximate Period of Use in D-NG:

- December 1909

Notes:

- Transporting relief crew then relieved crew of *SMS Planet*

This is the possible period of use in D-NG waters. At present, no copies of this cancel used in D-NG waters during this period are known to exist.



*Prinz Waldemar*

# German New Guinea Deutsch-Neuguinea



## Marine-Schiffspost Postmarks

MSP No. 5



### *SMS Nürnberg*

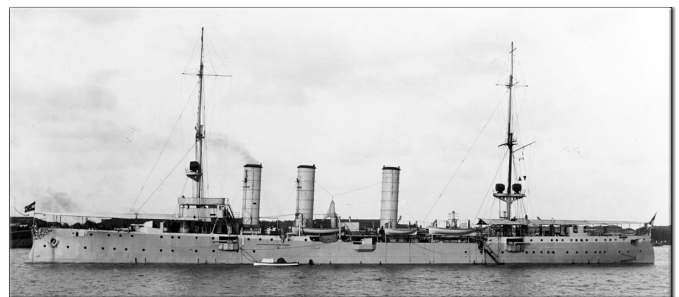
Type: Light cruiser  
Class: *Königsberg* class  
Commissioned: 10 April 1908  
Fate: Sunk at the Battle of the Falkland Islands,  
8 December 1914

#### Period of Use on this Ship:

- 14 February 1910 to 31 July 1914

#### Approximate Period of Use in D-NG:

- August 1910 to September 1910



*SMS Nürnberg*

# German New Guinea Deutsch-Neuguinea



## Marine-Schiffspost Postmarks

MSP No. 7



### *SMS Möwe I*

Type: Gunboat / Survey ship

Class: *Habicht* class

Commissioned: 31 May 1880

Fate: Decommissioned, 9 December 1905

Period of Use on this Ship:

- December 1895 to 29 October 1905

Approximate Periods of Use in D-NG:

- December 1895 to August 1896
- December 1896 to October 1897
- March 1898 to October 1898
- April 1899 to August 1899
- December 1899 to August 1900
- June 1901 to December 1901
- April 1902 to December 1902
- April 1903 to October 1903
- June 1904 to August 1905



*SMS Möwe I*



# German New Guinea Deutsch-Neuguinea



## Marine-Schiffspost Postmarks

MSP No. 8



### *SMS Cormoran*

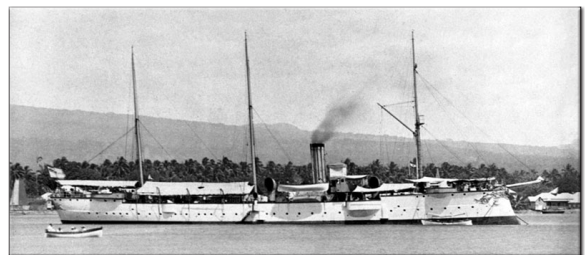
Type: Unprotected cruiser  
Class: *Bussard* class  
Commissioned: 25 July 1893  
Fate: Scuttled at Tsingtau, 28 September 1914

#### Periods of Use on this Ship:

- May 1897 to 13 September 1903
- 8 May 1909 to 31 July 1914

#### Approximate Periods of Use in D-NG:

- |                                  |                          |                                 |
|----------------------------------|--------------------------|---------------------------------|
| • March 1899 to April 1899       | • April 1910             | • July 1911                     |
| • December 1900 to March 1901    | • June 1910 to July 1910 | • January 1912 to February 1912 |
| • June 1901 to July 1901         | • October 1910           | • March 1912 to April 1912      |
| • February 1902 to March 1902    | • December 1910          | • August 1912 to October 1912   |
| • February 1903 to March 1903    | • March 1911             | • July 1913 to October 1913     |
| • September 1909 to October 1909 | • June 1911              | • January 1914 to March 1914    |



*SMS Cormoran*

# German New Guinea Deutsch-Neuguinea



## Marine-Schiffspost Postmarks

MSP No. 11



### *SMS Seeadler*

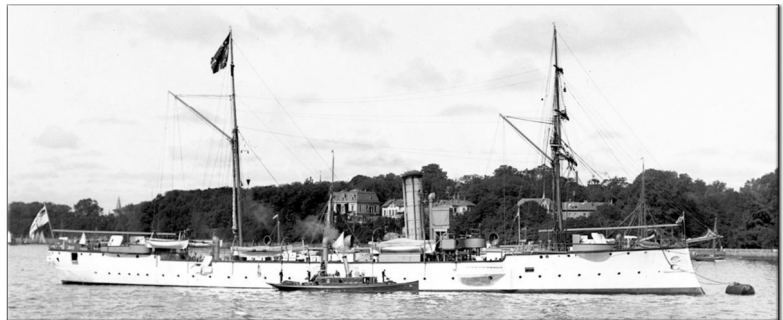
Type: Unprotected cruiser  
Class: *Bussard* class  
Commissioned: 17 August 1892  
Fate: Exploded at Wilhelmshaven while being  
used to store mines, 19 April 1917

#### Period of Use on this Ship:

- 11 October 1899 to 20 March 1914

#### Approximate Periods of Use in D-NG:

- January 1900
- May 1900



*SMS Seeadler*

# German New Guinea Deutsch-Neuguinea



## Marine-Schiffspost Postmarks

MSP No. 13



### *Prinz Sigismund*

Type: Scheduled civilian steamer (NDL)

Launched: 12 May 1903

Fate: Interned & seized by the British in Brisbane, August 1914

Period of Use on this Ship:

- 2 December 1910 to 26 December 1910

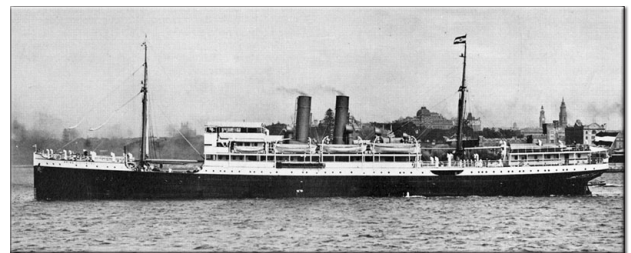
Approximate Period of Use in D-NG:

- December 1910

Notes:

- Transporting relief crew then relieved crew of *SMS Planet*

This is the possible period of use in D-NG waters. At present, no copies of this cancel used in D-NG waters during this period are known to exist.



*Prinz Sigismund*

# German New Guinea Deutsch-Neuguinea



## Marine-Schiffspost Postmarks

MSP No. 15



### *Prinz Sigismund*

Type: Scheduled civilian steamer (NDL)  
Launched: 12 May 1903  
Fate: Interned & seized by the British in  
Brisbane, August 1914

#### Period of Use on this Ship:

- 5 December 1907 to 27 December 1907

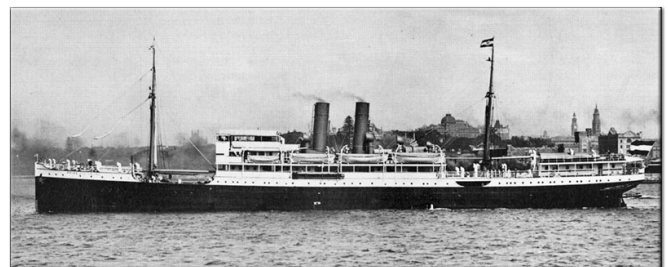
#### Approximate Period of Use in D-NG:

- December 1907

#### Notes:

- Transporting relief crew then relieved crew of *SMS Planet*

This is the possible period of use in D-NG waters. At present, no copies of this cancel used in D-NG waters during this period are known to exist.



*Prinz Sigismund*

# German New Guinea Deutsch-Neuguinea



## Marine-Schiffspost Postmarks

MSP No. 16



### *SMS Scharnhorst*

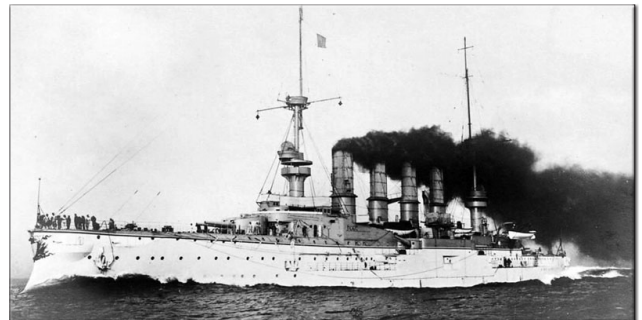
Type: Armored cruiser  
Class: *Scharnhorst* class  
Commissioned: 24 October 1907  
Fate: Sunk at the Battle of the Falkland Islands,  
8 December 1914

Period of Use on this Ship:

- 2 November 1907 to 31 July 1914

Approximate Periods of Use in D-NG:

- August 1910
- July 1913



*SMS Scharnhorst*

# German New Guinea Deutsch-Neuguinea



## Marine-Schiffspost Postmarks

MSP No. 17



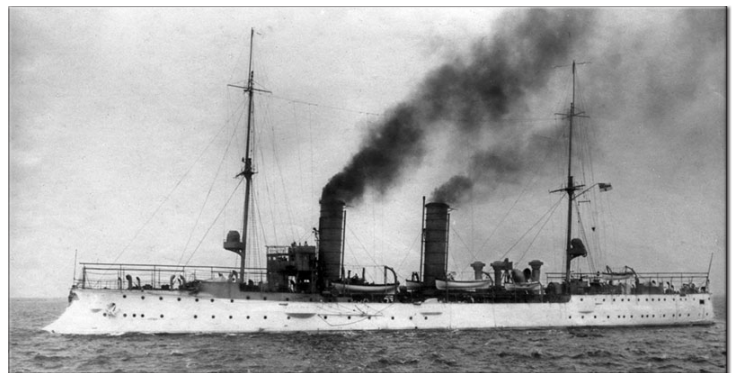
### *SMS Arcona II*

Type: Light cruiser  
Class: *Gazelle* class  
Commissioned: 12 May 1903  
Fate: Scuttled at Brunsbüttel, 3 May 1945

Period of Use on this Ship:  
• 15 July 1903 to 2 April 1910

Approximate Periods of Use in D-NG:  
• March 1909                      • May 1909

These are the possible periods of use in D-NG waters.  
At present, no copies of this cancel used in D-NG waters during these periods are known to exist.



*SMS Arcona II*

# German New Guinea Deutsch-Neuguinea



## Marine-Schiffspost Postmarks

MSP No. 22



### *SMS Gneisenau II*

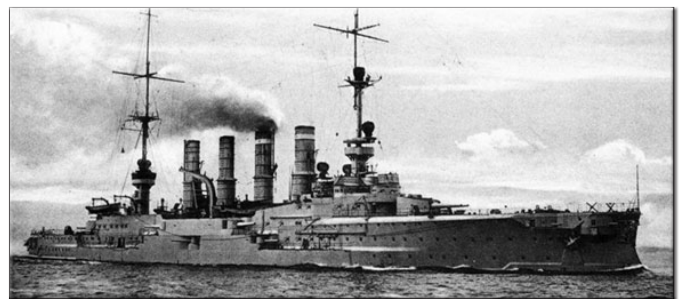
Type: Armored cruiser  
Class: *Scharnhorst* class  
Commissioned: 6 March 1908  
Fate: Sunk at the Battle of the Falkland Islands,  
8 December 1914

Period of Use on this Ship:

- 10 November 1910 to 31 July 1914

Approximate Period of Use in D-NG:

- July 1913



*SMS Gneisenau II*

# German New Guinea Deutsch-Neuguinea



## Marine-Schiffspost Postmarks

MSP No. 28



### *SMS Emden*

Type: Light cruiser  
Class: *Dresden* class  
Commissioned: 10 July 1909  
Fate: Disabled by *HMAS Sydney* and grounded  
off the Cocos Islands, 9 November 1914

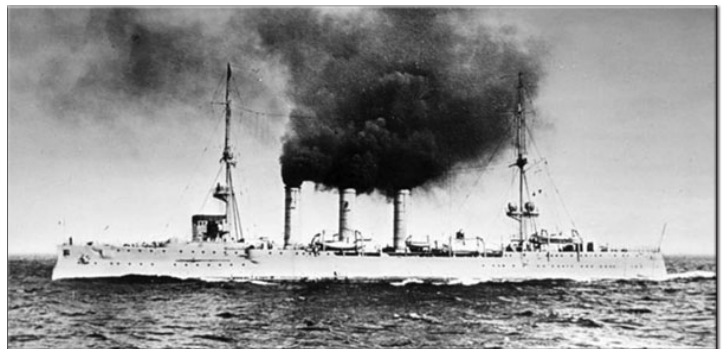
Period of Use on this Ship:

- 9 April 1910 to 31 July 1914

Approximate Periods of Use in D-NG:

- August 1910 to September 1910
- July 1913

These are the possible periods of use in D-NG waters.  
At present, no copies of this cancel used in D-NG  
waters during these periods are known to exist.



*SMS Emden*



# German New Guinea Deutsch-Neuguinea



## Marine-Schiffspost Postmarks

MSP No. 29



### *Manila*

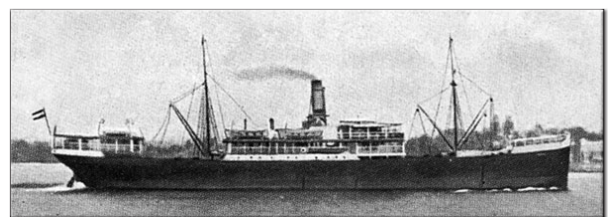
Type: Scheduled civilian steamer (NDL)  
Launched: 18 January 1904  
Fate: Interned at Ambon Island, Dutch East Indies, August 1914;  
Seized by the British, 1919

Period of Use on this Ship:  
• 3 December 1908 to 1 January 1909

Approximate Period of Use in D-NG:  
• December 1908

Notes:  
• Transporting relief crew then relieved crew of *SMS Planet*

This is the possible period of use in D-NG waters. At present, no copies of this cancel used in D-NG waters during this period are known to exist.



*Manila*

# German New Guinea Deutsch-Neuguinea



## Marine-Schiffspost Postmarks

MSP No. 45

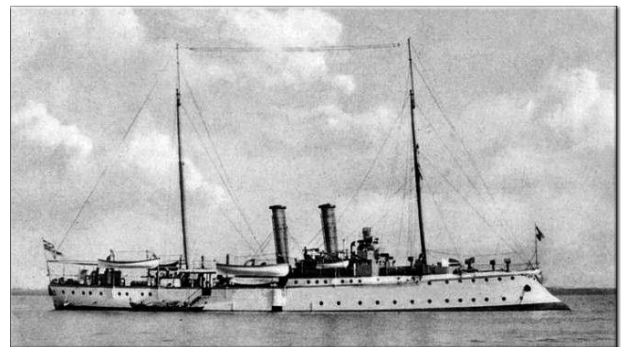


### *SMS Jaguar*

Type: Gunboat  
Class: *Iltis* class  
Commissioned: 4 April 1899  
Fate: Scuttled at Kiautschou, 7 November 1914

Period of Use on this Ship:  
• 23 May 1899 to 31 July 1914

Approximate Periods of Use in D-NG:  
• September 1899  
• November 1908  
• December 1908  
• March 1909



*SMS Jaguar*

# German New Guinea Deutsch-Neuguinea



## Marine-Schiffspost Postmarks

MSP No. 46



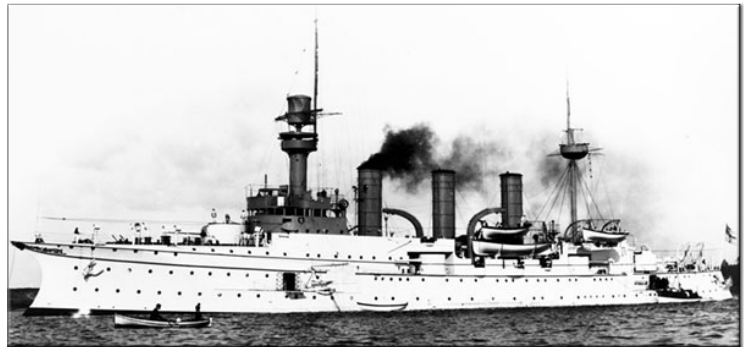
### *SMS Hansa II*

Type: Protected cruiser  
Class: *Victoria Louise* class  
Commissioned: 20 April 1899  
Fate: Decommissioned, 16 November 1914

Period of Use on this Ship:  
• 16 August 1899 to 12 October 1906

Approximate Period of Use in D-NG:  
• June 1901

Notes:  
• Primarily feldpost during the Boxer Rebellion



*SMS Hansa II*

# German New Guinea Deutsch-Neuguinea



## Marine-Schiffspost Postmarks

MSP No. 49



### *Coblenz I*

Type: Scheduled civilian steamer (NDL)  
Launched: 18 March 1897  
Fate: Interned at Manila, August 1914;  
Seized by the USA, 1917

Period of Use on this Ship:

- 1 December 1911 to 26 December 1911

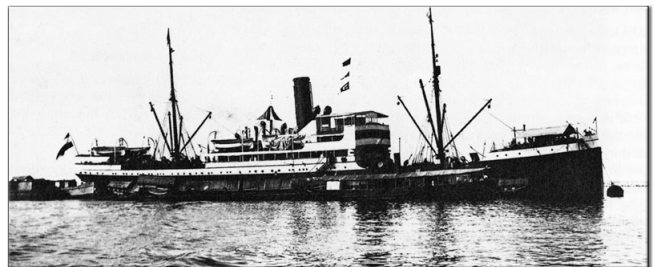
Approximate Period of Use in D-NG:

- December 1911

Notes:

- Transporting relief crew then relieved crew of *SMS Planet*

This is the possible period of use in D-NG waters. At present, no copies of this cancel used in D-NG waters during this period are known to exist.



*Coblenz I*

# German New Guinea Deutsch-Neuguinea



## Marine-Schiffspost Postmarks

MSP No. 60



### *SMS Condor*

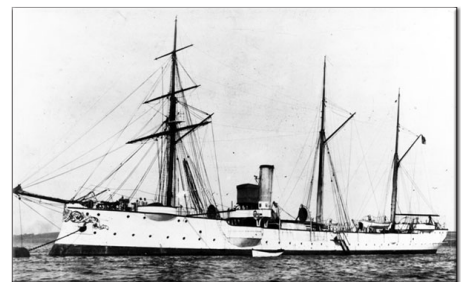
Type: Unprotected cruiser  
Class: *Bussard* class  
Commissioned: 9 December 1892  
Fate: Decommissioned, 30 March 1914

#### Period of Use on this Ship:

- 11 April 1903 to 20 March 1914

#### Approximate Periods of Use in D-NG:

- |                                 |                                   |                                  |
|---------------------------------|-----------------------------------|----------------------------------|
| • March 1904 to April 1904      | • December 1908 to February 1909  | • December 1911 to February 1912 |
| • February 1905 to March 1905   | • November 1909 to December 1909  | • August 1912 to September 1912  |
| • January 1906 to February 1906 | • January 1910 to March 1910      | • November 1912 to February 1913 |
| • July 1906 to August 1906      | • September 1910 to November 1910 | • July 1913 to October 1913      |
| • January 1908 to February 1908 | • February 1911                   |                                  |



*SMS Condor*

# German New Guinea Deutsch-Neuguinea



## Marine-Schiffspost Postmarks

MSP No. 63



### *SMS Planet*

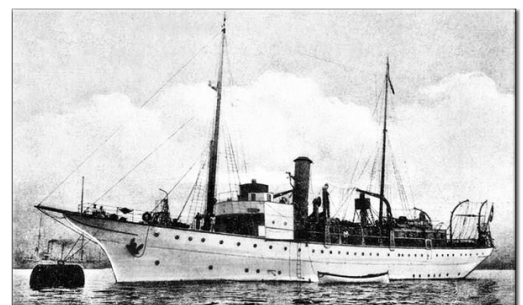
Type: Survey ship  
Class: *Planet* class  
Commissioned: 16 November 1905  
Fate: Scuttled at Yap, Karolinen, 7 October 1914

#### Period of Use on this Ship:

- 7 December 1905 to 31 July 1914

#### Approximate Periods of Use in D-NG:

- |                                  |                                  |
|----------------------------------|----------------------------------|
| • September 1906 to January 1907 | • November 1910 to December 1910 |
| • May 1907 to March 1908         | • March 1911                     |
| • July 1908 to March 1909        | • June 1911 to January 1912      |
| • July 1909 to August 1909       | • June 1912 to March 1913        |
| • September 1909 to March 1910   | • July 1913 to January 1914      |
| • July 1910 to September 1910    | • June 1914 to July 1914         |



*SMS Planet*

# German New Guinea Deutsch-Neuguinea



## Marine-Schiffspost Postmarks

MSP No. 68



### *Sandakan*

Type: Scheduled civilian steamer (NDL)

Launched: 25 June 1904

Fate: Interned & seized by the British at  
Labuan, Straits Settlements, 1914

Period of Use on this Ship:

- 4 December 1906 to 23 December 1906

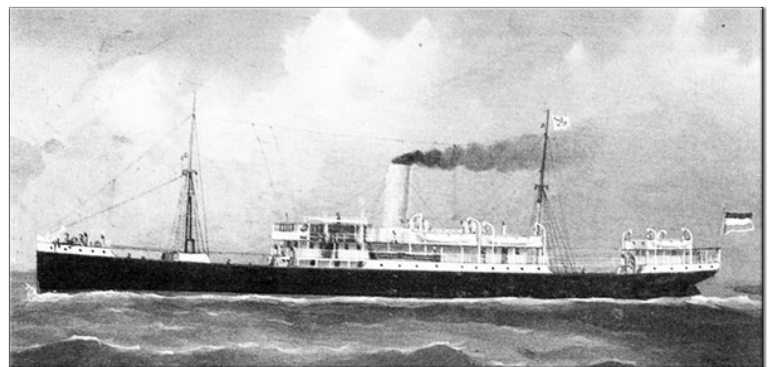
Approximate Period of Use in D-NG:

- December 1906

Notes:

- Transporting relief crew for *SMS Planet*

This is the possible period of use in D-NG waters.  
At present, no copies of this cancel used in D-NG  
waters during this period are known to exist.



*Sandakan*

# German New Guinea Deutsch-Neuguinea



## Marine-Schiffspost Postmarks

MSP No. 68



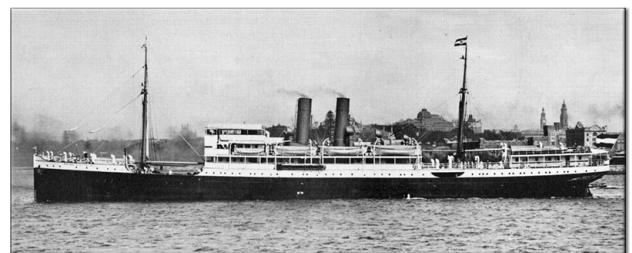
### *Prinz Sigismund*

Type: Scheduled civilian steamer (NDL)  
Launched: 12 May 1903  
Fate: Interned & seized by the British in Brisbane, August 1914

Period of Use on this Ship:  
• 23 December 1906 to 2 January 1907

Approximate Period of Use in D-NG:  
• December 1906

Notes:  
• Transporting crew relieved from *SMS Planet* to Sydney



*Prinz Sigismund*



# German New Guinea Deutsch-Neuguinea



## Marine-Schiffspost Postmarks

MSP No. 86



### *Coblenz I*

Type: Scheduled civilian steamer (NDL)  
Launched: 18 March 1897  
Fate: Interned at Manila, August 1914;  
Seized by the USA, 1917

Period of Use on this Ship:

- 12 June 1914 to 6 July 1914

Approximate Period of Use in D-NG:

- June 1914

Notes:

- Transporting relief crew then relieved crew of *SMS Planet*

This is the possible period of use in D-NG waters. At present, no copies of this cancel used in D-NG waters during this period are known to exist.



*Coblenz I*

# German New Guinea Deutsch-Neuguinea



## Seepost Postmarks

### Neu-Guinea-Zweiglinie

Catalog:

- Friedemann SP 1 a
- ArGe Kolonien DEUTSCHE SEEPOST NEU-GUINEA-ZWEIGLINIE a



### *Lübeck*

Type: Civilian steamer (NDL)  
Launched: 8 April 1886  
Fate: Sold to Japan, 1895

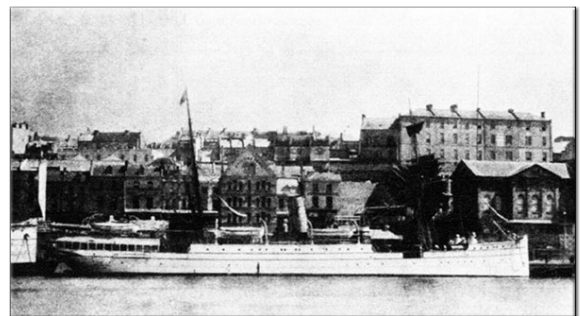
The Neu-Guinea-Zweiglinie, or New Guinea Branch Line, began its round-trip service from Singapore to Herbertshöhe, Deutsch-Neuguinea, on 27 April 1893. The line was discontinued in mid-1900, though beginning in 1905, the cancellers were re-used on the Austral-Japan-Linie.

Period of Use on this Ship:

- 3 October 1893 to 13 December 1893

Notes:

- During this period, can only be found on German Empire postage



*Lübeck*

# German New Guinea Deutsch-Neuguinea



## Seepost Postmarks

### Neu-Guinea-Zweiglinie

Catalog:

- Friedemann SP 1 b
- ArGe Kolonien DEUTSCHE SEEPOST NEU-GUINEA-ZWEIGLINIE b



### *Lübeck*

Type: Civilian steamer (NDL)  
Launched: 8 April 1886  
Fate: Sold to Japan, 1895

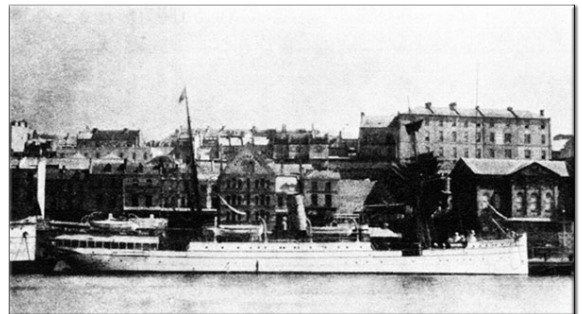
The Neu-Guinea-Zweiglinie, or New Guinea Branch Line, began its round-trip service from Singapore to Herbertshöhe, Deutsch-Neuguinea, on 27 April 1893. The line was discontinued in mid-1900, though beginning in 1905, the cancellers were re-used on the Austral-Japan-Linie.

Period of Use on this Ship:

- 22 December 1893 to 26 June 1895

Notes:

- During this period, can only be found on German Empire postage



*Lübeck*

# German New Guinea Deutsch-Neuguinea



## Seepost Postmarks

### Neu-Guinea-Zweiglinie

Catalog:

- Friedemann SP 1 b
- ArGe Kolonien DEUTSCHE SEEPOST NEU-GUINEA-ZWEIGLINIE b



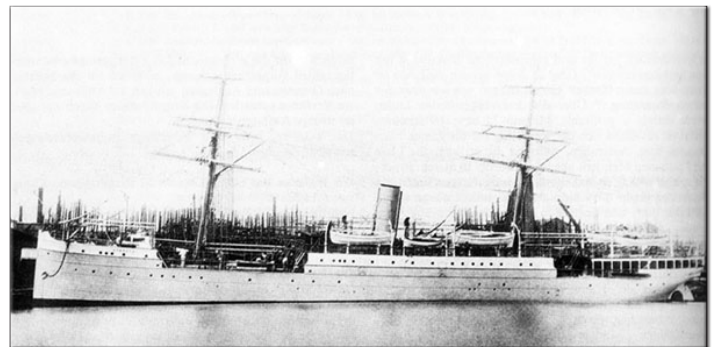
### *Stettin*

Type: Civilian steamer (NDL)  
Launched: 1 April 1886  
Fate: Sold to China, 1900

The Neu-Guinea-Zweiglinie, or New Guinea Branch Line, began its round-trip service from Singapore to Herbertshöhe, Deutsch-Neuguinea, on 27 April 1893. The line was discontinued in mid-1900, though beginning in 1905, the cancellers were re-used on the Austral-Japan-Linie.

Period of Use on this Ship:

- 8 July 1895 to 10 July 1900



*Stettin*

# German New Guinea Deutsch-Neuguinea



## Seepost Postmarks

### Neu-Guinea-Zweiglinie (Singapore)

Catalog:

- Friedemann SP 2 a
- ArGe Kolonien DEUTSCHE SEEPOST NEU-GUINEA-ZWEIGLINIE (SINGAPORE) a



### *Stettin*

Type: Civilian steamer (NDL)

Launched: 1 April 1886

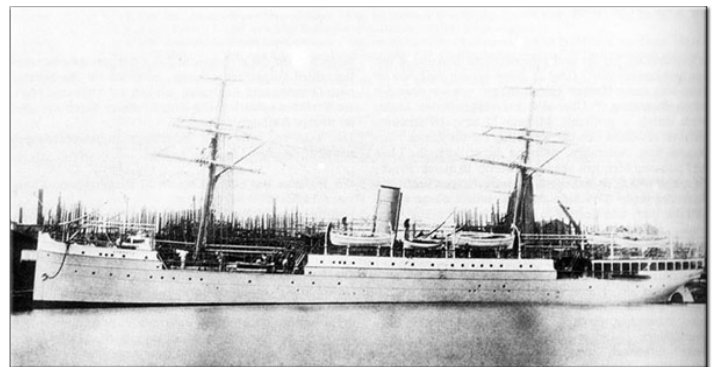
Fate: Sold to China, 1900

The Neu-Guinea-Zweiglinie (Singapore), or New Guinea Branch Line (Singapore), was a successor to the Neu-Guinea-Zweiglinie, extending the Singapore-Neuguinea route to Sydney.

Service began on 20 July 1900 and continued until January 1905.

Period of Use on this Ship:

- 20 July 1900 to 9 March 1902



*Stettin*

# German New Guinea Deutsch-Neuguinea



## Seepost Postmarks

### Neu-Guinea-Zweiglinie (Singapore)

Catalog:

- Friedemann SP 2 a
- ArGe Kolonien DEUTSCHE SEEPOST NEU-GUINEA-ZWEIGLINIE (SINGAPORE) a



### *Tanglin*

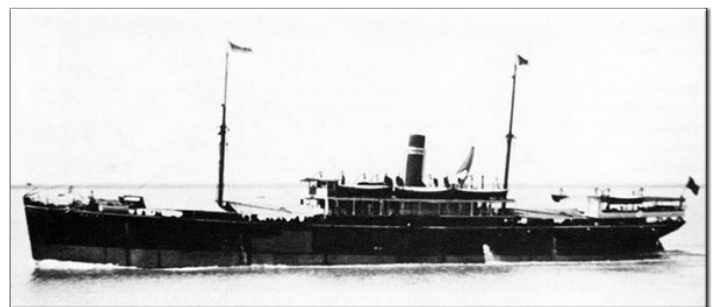
Type: Civilian steamer (NDL)  
Launched: 23 October 1900  
Fate: Sold to India, 1906

The Neu-Guinea-Zweiglinie (Singapore), or New Guinea Branch Line (Singapore), was a successor to the Neu-Guinea-Zweiglinie, extending the Singapore-Neuguinea route to Sydney.

Service began on 20 July 1900 and continued until January 1905.

Periods of Use on this Ship:

- 17 March 1902 to 3 May 1903
- 2 August 1903 to 18 October 1903



*Paknam*, sister ship of *Tanglin* (no photo available)

# German New Guinea Deutsch-Neuguinea



## Seepost Postmarks

### Neu-Guinea-Zweiglinie (Singapore)

Catalog:

- Friedemann SP 2 a
- ArGe Kolonien DEUTSCHE SEEPOST NEU-GUINEA-ZWEIGLINIE (SINGAPORE) a



### *Deli*

Type: Civilian steamer (NDL)

Launched: 23 November 1899

Fate: Interned at Bangkok, Thailand, August 1914;

Seized by Siam, 22 July 1917

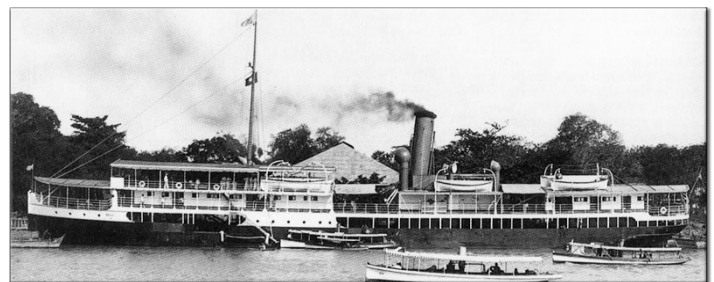
The Neu-Guinea-Zweiglinie (Singapore), or New Guinea Branch Line (Singapore), was a successor to the Neu-Guinea-Zweiglinie, extending the Singapore-Neuguinea route to Sydney. Service began on 20 July 1900 and continued until January 1905.

Period of Use on this Ship:

- 12 May 1903 to 26 July 1903

Notes:

- Violet ink on 16 May 1903



*Deli*

# German New Guinea Deutsch-Neuguinea



## Seepost Postmarks

### Neu-Guinea-Zweiglinie (Singapore)

Catalog:

- Friedemann SP 2 a
- ArGe Kolonien DEUTSCHE SEEPOST NEU-GUINEA-ZWEIGLINIE (SINGAPORE) a



### *Prinz Sigismund*

Type: Civilian steamer (NDL)

Launched: 12 May 1903

Fate: Interned & seized by the British, Brisbane, August 1914

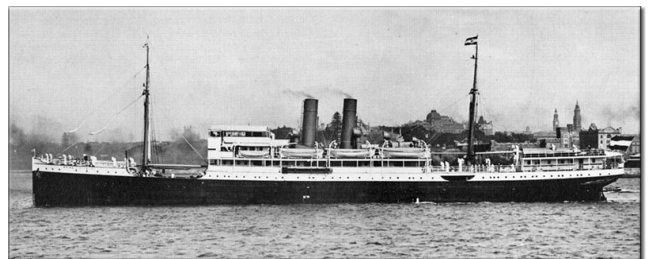
The Neu-Guinea-Zweiglinie (Singapore), or New Guinea Branch Line (Singapore), was a successor to the Neu-Guinea-Zweiglinie, extending the Singapore-Neuguinea route to Sydney. Service began on 20 July 1900 and continued until January 1905.

Period of Use on this Ship:

- 23 October 1903 to 4 January 1905

Notes:

- 4 May 1905 cancels are erroneous (4 January 1905)



*Prinz Sigismund*



# German New Guinea Deutsch-Neuguinea



## Seepost Postmarks

### Neu-Guinea-Zweiglinie (Singapore)

Catalog:

- Friedemann SP 2 b
- ArGe Kolonien DEUTSCHE SEEPOST NEU-GUINEA-ZWEIGLINIE (SINGAPORE) b



### *Stettin*

Type: Civilian steamer (NDL)

Launched: 1 April 1886

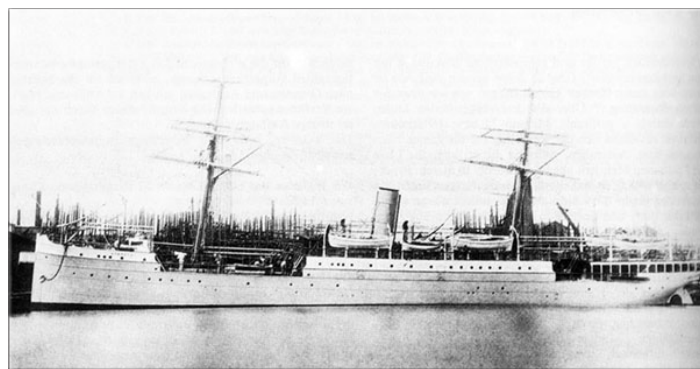
Fate: Sold to China, 1900

The Neu-Guinea-Zweiglinie (Singapore), or New Guinea Branch Line (Singapore), was a successor to the Neu-Guinea-Zweiglinie, extending the Singapore-Neuguinea route to Sydney.

Service began on 20 July 1900 and continued until January 1905.

Period of Use on this Ship:

- 25 April 1902 to 6 September 1903



*Stettin*

# German New Guinea Deutsch-Neuguinea



## Seepost Postmarks

### Neu-Guinea-Zweiglinie (Singapore)

Catalog:

- Friedemann SP 2 b
- ArGe Kolonien DEUTSCHE SEEPOST NEU-GUINEA-ZWEIGLINIE (SINGAPORE) b



### *Prinz Waldemar*

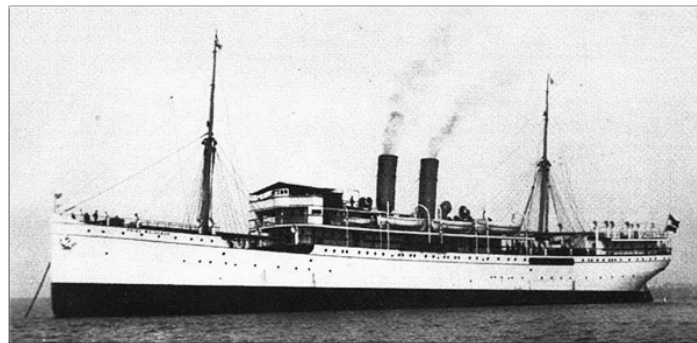
Type: Civilian steamer (NDL)  
Launched: 3 June 1903  
Fate: Interned in Honolulu, 1914;  
Seized by the USA, 6 April 1917

The Neu-Guinea-Zweiglinie (Singapore), or New Guinea Branch Line (Singapore), was a successor to the Neu-Guinea-Zweiglinie, extending the Singapore-Neuguinea route to Sydney.

Service began on 20 July 1900 and continued until January 1905.

Period of Use on this Ship:

- 11 September 1903 to 1 February 1905



*Prinz Waldemar*

# German New Guinea Deutsch-Neuguinea



## Seepost Postmarks

### Neu-Guinea-Zweiglinie (Hongkong)

Catalog:

- Friedemann SP 3
- ArGe Kolonien DEUTSCHE SEEPOST NEU-GUINEA-ZWEIGLINIE (HONGKONG) a



### *München*

Type: Civilian steamer (NDL)  
Launched: 23 January 1889  
Fate: Sold to China, 1905

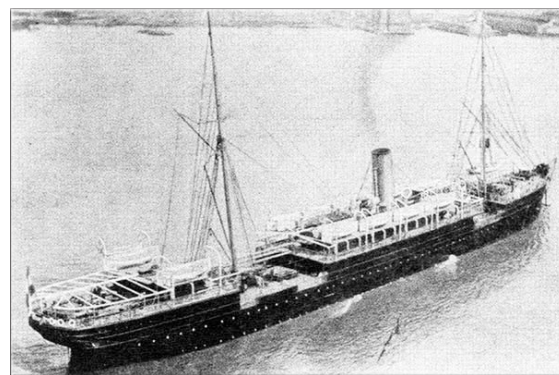
The Neu-Guinea-Zweiglinie (Hongkong), or New Guinea Branch Line (Hong Kong), ran from Hong Kong to Sydney via the German colonies of Marianen, Karolinen, and Deutsch-Neuguinea. The service ran from July 1900 to December 1901.

Period of Use on this Ship:

- 27 July 1900 to 3 February 1901

Notes:

- No "01" year slug until 7 January 1901



*München*

# German New Guinea Deutsch-Neuguinea



## Seepost Postmarks

### Neu-Guinea-Zweiglinie (Hongkong)

Catalog:

- Friedemann SP 3
- ArGe Kolonien DEUTSCHE SEEPOST NEU-GUINEA-ZWEIGLINIE (HONGKONG) a



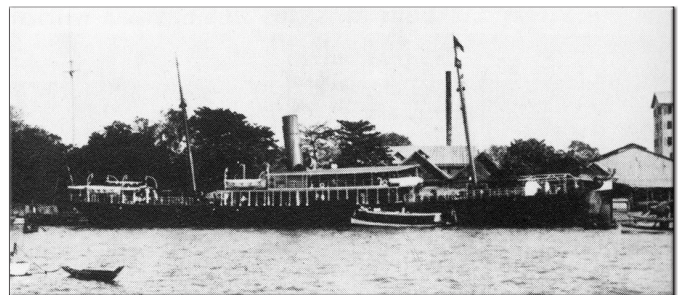
### *Nuen-Tung*

Type: Civilian steamer (NDL)  
Launched: 21 May 1900  
Fate: Sold to the Philippines, 1913

The Neu-Guinea-Zweiglinie (Hongkong), or New Guinea Branch Line (Hong Kong), ran from Hong Kong to Sydney via the German colonies of Marianen, Karolinen, and Deutsch-Neuguinea. The service ran from July 1900 to December 1901.

Period of Use on this Ship:  
• 3 April 1901 to 24 January 1902

Notes:  
• "01" year hand-corrected to "02" until 24 January 1902



*Nuen-Tung*

# German New Guinea Deutsch-Neuguinea



## Seepost Postmarks

### Neu-Guinea-Zweiglinie (Hongkong)

Catalog:

- Friedemann SP 3
- ArGe Kolonien DEUTSCHE SEEPOST NEU-GUINEA-ZWEIGLINIE (HONGKONG) a



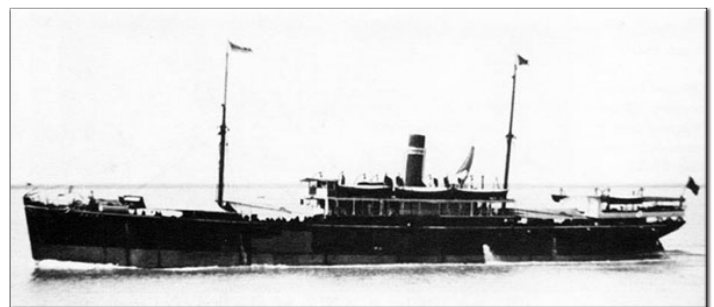
### *Paknam*

Type: Civilian steamer (NDL)  
Launched: 6 October 1900  
Fate: Sold to India, 1908

The Neu-Guinea-Zweiglinie (Hongkong), or New Guinea Branch Line (Hong Kong), ran from Hong Kong to Sydney via the German colonies of Marianen, Karolinen, and Deutsch-Neuguinea. The service ran from July 1900 to December 1901.

Period of Use on this Ship:

- 1 February 1902 to 25 April 1902



*Paknam*

# German New Guinea Deutsch-Neuguinea



## Seepost Postmarks

### Sydney - Jaluit - Yap Linie



Catalog:

- Friedemann: Not listed for D-NG
- ArGe Kolonien DEUTSCHE SEEPOST SYDNEY-JALUIT-YAP

### *Oceana*

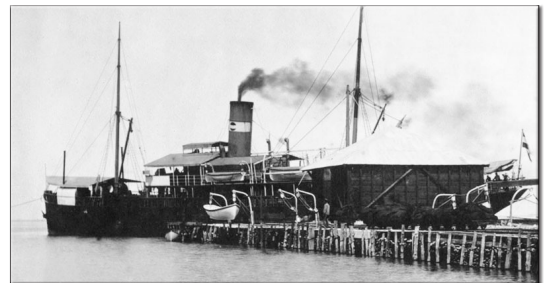
Type: Civilian steamer (Jaluit Gesellschaft)

Launched: 1891 as *Harold*

Fate: Sold to Australia, 1905

The Jaluit-Gesellschaft's Sydney-Jaluit-Yap Linie was instituted on 1 January 1901 to connect the colonies of Karolinen and Marianen with the main German lines terminating in Australia and East Asia.

Following the cancellation of the Neu-Guinea-Zweiglinie (Hongkong) route in November 1901, the terminus of the Sydney-Jaluit-Yap Linie was extended in January 1902 from Yap to Hong Kong, with a stop in Herbertshöhe, Deutsch-Neuguinea, every 16 weeks on the return voyage.



*Oceana*

Period of Use on this Ship:

- 15 January 1901 to 29 June 1902

Notes:

- Only possible uses in D-NG are from January 1902 to June 1902

# German New Guinea Deutsch-Neuguinea



## Seepost Postmarks

### Sydney - Hongkong Linie

Catalog:

- Friedemann SP 4
- ArGe Kolonien DEUTSCHE SEEPOST SYDNEY-HONGKONG a



### *Oceana*

Type: Civilian steamer (Jaluit Gesellschaft)

Launched: 1891 as *Harold*

Fate: Sold to Australia, 1905

In June 1902, a new canceller was introduced on the Sydney-Jaluit-Yap Linie reflecting the new terminus of the route in Hong Kong.

In 1902, the ships of the line stopped in Herbertshöhe, Deutsch-Neuguinea, every 16 weeks on the return voyage.

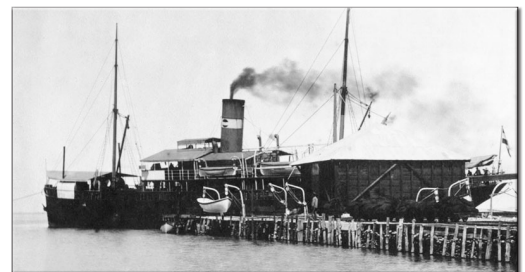
The line was renamed the Jaluit-Linie in early 1905.

Period of Use on this Ship:

- 11 July 1902 to 21 January 1904

Notes:

- Only uses in D-NG are from 1902



*Oceana*

# German New Guinea Deutsch-Neuguinea



## Seepost Postmarks

### Austral-Japan-Linie

Catalog:

- Friedemann: mentioned as unauthorized, but not listed
- ArGe Kolonien D. WILLEHAD NDL BREMEN



### *Willehad*

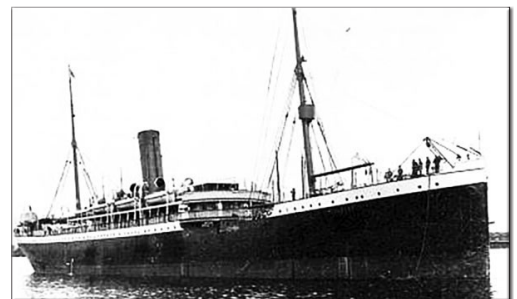
Type: Civilian steamer (NDL)  
Launched: 21 March 1894  
Fate: Interned in Boston, August 1914;  
Seized by the USA, 1917

In late 1904 or early 1905, Norddeutscher-Lloyd resumed the Neu-Guinea-Zweiglinie, which had been discontinued in mid-1900, as the Austral-Japan-Linie. This line would run until the outbreak of World War I.

Prior to the reintroduction of the previous Neu-Guinea-Zweiglinie cancellers, the steamer *Willehad* used provisional cancels on mail carried on the route.

Period of Use on this Ship:  
• 29 January 1905 to 27 April 1905

Notes:  
• Blue or black ink



*Willehad*



# German New Guinea Deutsch-Neuguinea



## Seepost Postmarks

### Austral-Japan-Linie

Reichspostdampfer  
„WILLEHAD“

26 MAI 1905

Catalog:

- Friedemann: mentioned as unauthorized, but not listed
- ArGe Kolonien Reichspostdampfer "WILLEHAD"

### *Willehad*

Type: Civilian steamer (NDL)  
Launched: 21 March 1894  
Fate: Interned in Boston, August 1914;  
Seized by the USA, 1917

In late 1904 or early 1905, Norddeutscher-Lloyd resumed the Neu-Guinea-Zweiglinie, which had been discontinued in mid-1900, as the Austral-Japan-Linie. This line would run until the outbreak of World War I.

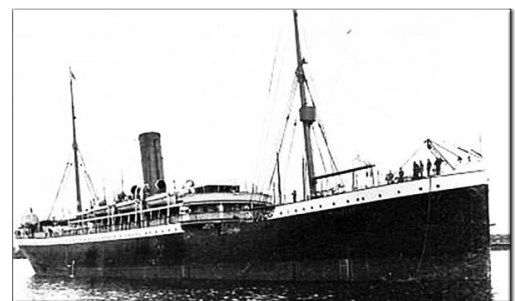
Prior to the reintroduction of the previous Neu-Guinea-Zweiglinie cancellers, the steamer *Willehad* used provisional cancels on mail carried on the route.

Period of Use on this Ship:

- 29 January 1905 to 27 April 1905

Notes:

- Blue ink



*Willehad*

# German New Guinea Deutsch-Neuguinea



## Seepost Postmarks

### Austral-Japan-Linie

Catalog:

- Friedemann SP 1 I a / SP 5 a
- ArGe Kolonien DEUTSCHE SEEPOST NEU-GUINEA-ZWEIGLINIE a



### *Willehad*

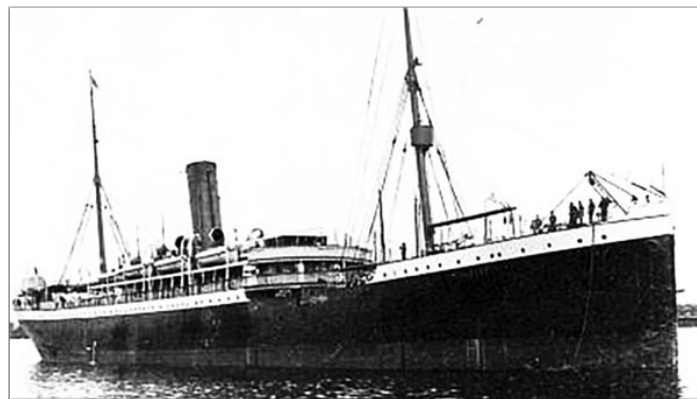
Type: Civilian steamer (NDL)  
Launched: 21 March 1894  
Fate: Interned in Boston, August 1914;  
Seized by the USA, 1917

In late 1904 or early 1905, Norddeutscher-Lloyd resumed the Neu-Guinea-Zweiglinie, which had been discontinued in mid-1900, as the Austral-Japan-Linie. This line would run until the outbreak of World War I.

In 1905, the previously retired "a" and "b" cancellers were reintroduced for use.

Period of Use on this Ship:

- June 1905 to 5 December 1906



*Willehad*

# German New Guinea Deutsch-Neuguinea



## Seepost Postmarks

### Austral-Japan-Linie

Catalog:

- Friedemann SP 1 I a / SP 5 a
- ArGe Kolonien DEUTSCHE SEEPOST NEU-GUINEA-ZWEIGLINIE a



### *Manila*

Type: Civilian steamer (NDL)

Launched: 18 January 1904

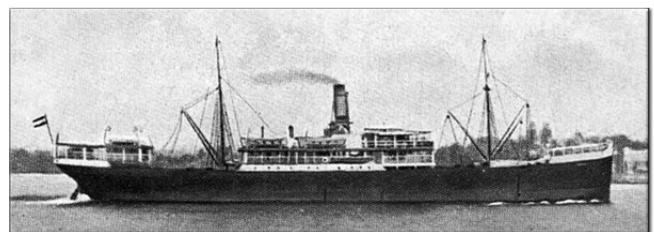
Fate: Interned at Ambon Island, Dutch East Indies, August 1914;  
Seized by the British, 1919

In late 1904 or early 1905, Norddeutscher-Lloyd resumed the Neu-Guinea-Zweiglinie, which had been discontinued in mid-1900, as the Austral-Japan-Linie. This line would run until the outbreak of World War I.

In 1905, the previously retired "a" and "b" cancellers were reintroduced for use.

Period of Use on this Ship:

- 21 December 1906 to 11 August 1909



*Manila*

# German New Guinea Deutsch-Neuguinea



## Seepost Postmarks

### Austral-Japan-Linie

Catalog:

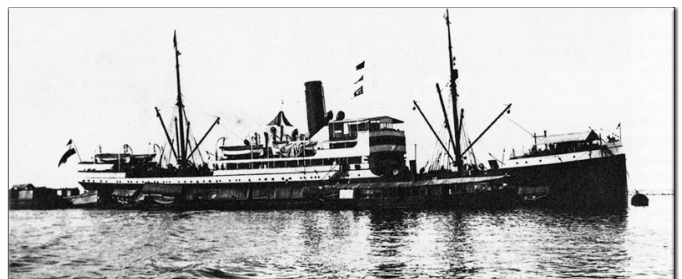
- Friedemann SP 1 I a / SP 5 a
- ArGe Kolonien DEUTSCHE SEEPOST NEU-GUINEA-ZWEIGLINIE a



### *Coblentz I*

Type: Civilian steamer (NDL)  
Launched: 18 March 1897  
Fate: Interned at Manila, August 1914;  
Seized by the USA, 1917

In late 1904 or early 1905, Norddeutscher-Lloyd resumed the Neu-Guinea-Zweiglinie, which had been discontinued in mid-1900, as the Austral-Japan-Linie. This line would run until the outbreak of World War I. In 1905, the previously retired "a" and "b" cancellers were reintroduced for use.



*Coblentz I*

Period of Use on this Ship:

- 13 August 1909 to 18 August 1914

Notes:

- Violet ink in 1911, 1913, 1914

# German New Guinea Deutsch-Neuguinea



## Seepost Postmarks

### Austral-Japan-Linie

Catalog:

- Friedemann SP 1 I b / SP 5 b
- ArGe Kolonien DEUTSCHE SEEPOST NEU-GUINEA-ZWEIGLINIE b



### *Prinz Waldemar*

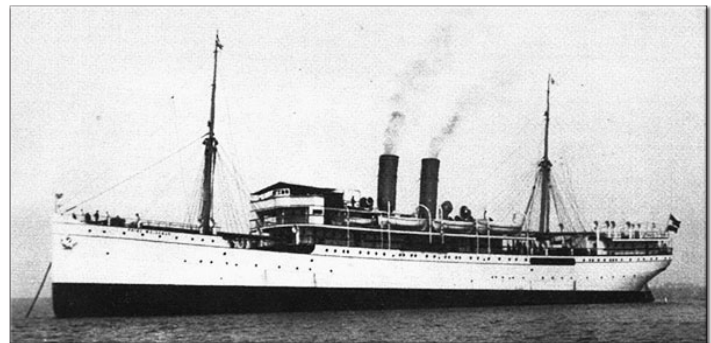
Type: Civilian steamer (NDL)  
Launched: 3 June 1903  
Fate: Interned in Honolulu, 1914;  
Seized by the USA, 6 April 1917

In late 1904 or early 1905, Norddeutscher-Lloyd resumed the Neu-Guinea-Zweiglinie, which had been discontinued in mid-1900, as the Austral-Japan-Linie. This line would run until the outbreak of World War I.

In 1905, the previously retired "a" and "b" cancellers were reintroduced for use.

Period of Use on this Ship:

- 3 February 1905 to October 1907



*Prinz Waldemar*

# German New Guinea Deutsch-Neuguinea



## Seepost Postmarks

### Austral-Japan-Linie

Catalog:

- Friedemann SP 1 I b / SP 5 b
- ArGe Kolonien DEUTSCHE SEEPOST NEU-GUINEA-ZWEIGLINIE b



### *Prinz Sigismund*

Type: Civilian steamer (NDL)

Launched: 12 May 1903

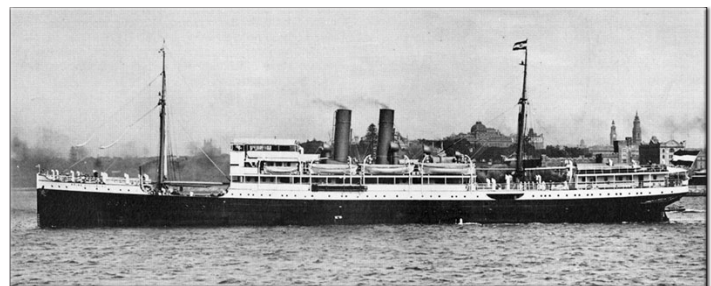
Fate: Interned & seized by the British,  
Brisbane, August 1914

In late 1904 or early 1905, Norddeutscher-Lloyd resumed the Neu-Guinea-Zweiglinie, which had been discontinued in mid-1900, as the Austral-Japan-Linie. This line would run until the outbreak of World War I.

In 1905, the previously retired "a" and "b" cancellers were reintroduced for use.

Period of Use on this Ship:

- 8 May 1908 to 3 August 1914



*Prinz Sigismund*

# German New Guinea Deutsch-Neuguinea



## Seepost Postmarks

### Austral-Japan-Linie

Catalog:

- Friedemann SP 5 c
- ArGe Kolonien DEUTSCHE SEEPOST NEU-GUINEA-ZWEIGLINIE c



### *Prinz Sigismund*

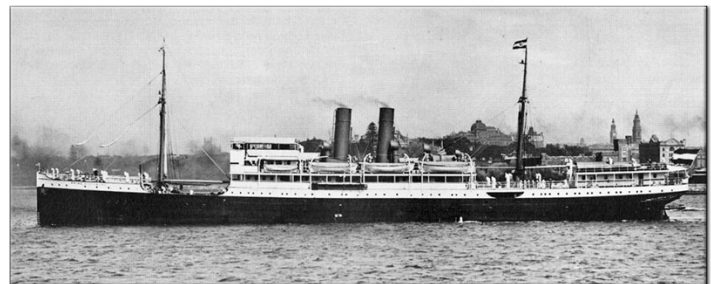
Type: Civilian steamer (NDL)

Launched: 12 May 1903

Fate: Interned & seized by the British, Brisbane,  
August 1914

In late 1904 or early 1905, Norddeutscher-Lloyd resumed the Neu-Guinea-Zweiglinie, which had been discontinued in mid-1900, as the Austral-Japan-Linie. This line would run until the outbreak of World War I.

In 1905, a new cancel with a slightly different design and letter "c" was introduced.



*Prinz Sigismund*

Period of Use on this Ship:

- April 1905 to 22 March 1907

Notes:

- Provisional year date "06" in 1906

# German New Guinea Deutsch-Neuguinea



## Seepost Postmarks

### Austral-Japan-Linie

Catalog:

- Friedemann SP 5 c
- ArGe Kolonien DEUTSCHE SEEPOST NEU-GUINEA-ZWEIGLINIE c



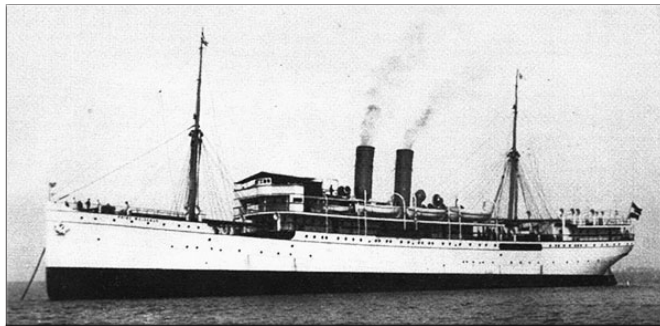
### *Prinz Waldemar*

Type: Civilian steamer (NDL)  
Launched: 3 June 1903  
Fate: Interned in Honolulu, 1914;  
Seized by the USA, 6 April 1917

In late 1904 or early 1905, Norddeutscher-Lloyd resumed the Neu-Guinea-Zweiglinie, which had been discontinued in mid-1900, as the Austral-Japan-Linie. This line would run until the outbreak of World War I.

In 1905, a new cancel with a slightly different design and letter "c" was introduced.

Period of Use on this Ship:      Notes:  
• 10 April 1907 to 30 July 1914      • Violet ink, 1911-1913



*Prinz Waldemar*



# German New Guinea Deutsch-Neuguinea



## Seepost Postmarks

### Jaluit-Linie

Catalog:

- Friedemann SP 6
- ArGe Kolonien DEUTSCHE SEEPOST JALUIT-LINIE b

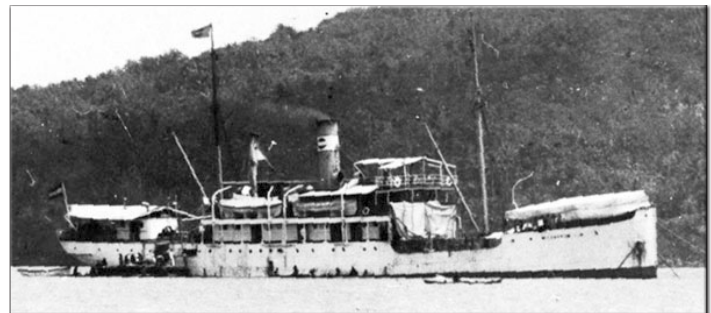


### *Germania*

Type: Civilian steamer (Jaluit Gesellschaft)  
Launched: 1904  
Fate: Interned & seized by Australia in Sydney,  
August 1914

In 1905, the Jaluit Gesellschaft extended its Sydney-Hongkong Linie to Deutsch-Neuguinea. In conjunction with this change, the line was renamed the Jaluit-Linie.

The "a" canceller was assigned to the *Oceana*, but she ran aground off Jaluit before it could be used. The "b" canceller was assigned to her successor, *Germania*.



*Germania*

Period of Use on this Ship:

- February 1905 to 30 July 1914

Notes:

- Violet ink, 1905-1907, 1912-1914

# German New Guinea Deutsch-Neuguinea



## Seepost Postmarks

### Singapore - Deutsch-Neuguinea Linie

Catalog:

- Friedemann SP 7
- ArGe Kolonien DEUTSCHE SEEPOST SINGAPORE DEUTSCH-NEUGUINEA



### *Manila*

Type: Civilian steamer (NDL)

Launched: 18 January 1904

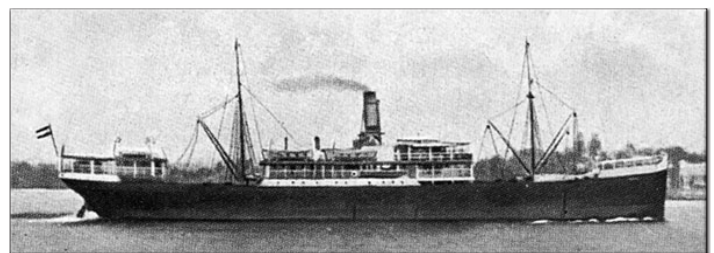
Fate: Interned at Ambon Island, Dutch East Indies,  
August 1914;

Seized by the British, 1919

In April 1909, the Neu-Guinea-Zweiglinie (Singapore) resumed operations as the Singapore - Deutsch-Neuguinea Linie. Two new cancellers were used — one for mail transported in the Singapore to Deutsch-Neuguinea direction, and the other for the reverse. The line ran until the outbreak of World War I.

Period of Use on this Ship:

- February 1910 to 20 July 1914



*Manila*

# German New Guinea Deutsch-Neuguinea



## Seepost Postmarks

### Singapore - Deutsch-Neuguinea Linie

Catalog:

- Friedemann SP 8
- ArGe Kolonien DEUTSCHE SEEPOST DEUTSCH-NEUGUINEA-SINGAPORE



### *Manila*

Type: Civilian steamer (NDL)

Launched: 18 January 1904

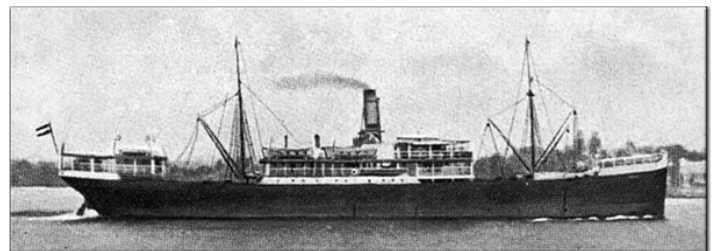
Fate: Interned at Ambon Island, Dutch East Indies,  
August 1914;

Seized by the British, 1919

In April 1909, the Neu-Guinea-Zweiglinie (Singapore) resumed operations as the Singapore - Deutsch-Neuguinea Linie. Two new cancellers were used — one for mail transported in the Singapore to Deutsch-Neuguinea direction, and the other for the reverse. The line ran until the outbreak of World War I.

Period of Use on this Ship:

- February 1910 to 9 August 1914



*Manila*

# German New Guinea Deutsch-Neuguinea



## Seepost Postmarks

### Deutsch-Neuguinea Inselfahrt

Catalog:

- Friedemann E 1
- ArGe Kolonien Dampfer Siar



### *Siar*

Type: Civilian steamer (Neuguinea-Kompagnie / NDL)

Launched: 1902

Fate: Captured by *HMAS Nusa* at Gardner Island,  
Deutsch-Neuguinea, 18 September 1914

During the period from 1903 to 1911, the steamer *Siar*, which provided inter-island transport for the Neuguinea-Kompagnie, also carried mail to and from islands that weren't served by official mail steamers.

The mail was cancelled "Siar" via handwriting or a handstamp, then normally received a Deutsch-Neuguinea postal cancel at the first official post office it transited.

Period of Use on this Ship:

- 1903 to 1911



*Siar*

# German New Guinea Deutsch-Neuguinea



## Seepost Postmarks

### Deutsch-Neuguinea Inselfahrt

Catalog:

- Friedemann E 2
- ArGe Kolonien Dampfer Siar



### *Siar*

Type: Civilian steamer (Neuguinea-Kompagnie / NDL)

Launched: 1902

Fate: Captured by *HMAS Nusa* at Gardner Island,  
Deutsch-Neuguinea, 18 September 1914

During the period from 1903 to 1911, the steamer *Siar*, which provided inter-island transport for the Neuguinea-Kompagnie, also carried mail to and from islands that weren't served by official mail steamers.

The mail was cancelled "*Siar*" via handwriting or a handstamp, then normally received a Deutsch-Neuguinea postal cancel at the first official post office it transited.

Period of Use on this Ship:

- 1903 to 1911



*Siar*

# German New Guinea Deutsch-Neuguinea



## Seepost Postmarks

### Deutsch-Neuguinea Inselfahrt

Catalog:

- Friedemann Unlisted
- ArGe Kolonien KGS Komet



### *Komet*

Type: Government steam yacht

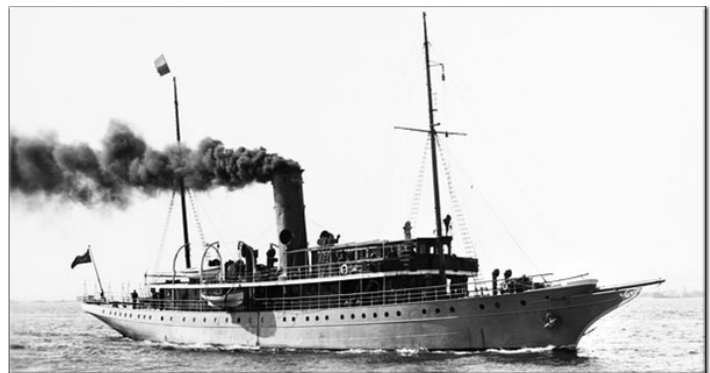
Launched: 6 April 1911

Fate: Captured by *HMAS Nusa*, 11 October 1914

For a period during 1912, the yacht *Komet* was used for mail delivery within the islands on an ad hoc basis. Mail transported on the yacht typically received either a handwritten or handstamped cancellation. These cancellations were unauthorized, and mail containing these markings was sometimes tolerated and at other times rejected by subsequent postal authorities.

Period of Use on this Ship:

- January 1912 to March 1912



*Komet*, while in Australian service as *HMAS Una*

# German New Guinea Deutsch-Neuguinea



## Seepost Postmarks

### Deutsch-Neuguinea Inselfahrt

Catalog:

- Friedemann Unlisted
- ArGe Kolonien KGS Komet



### *Komet*

Type: Government steam yacht

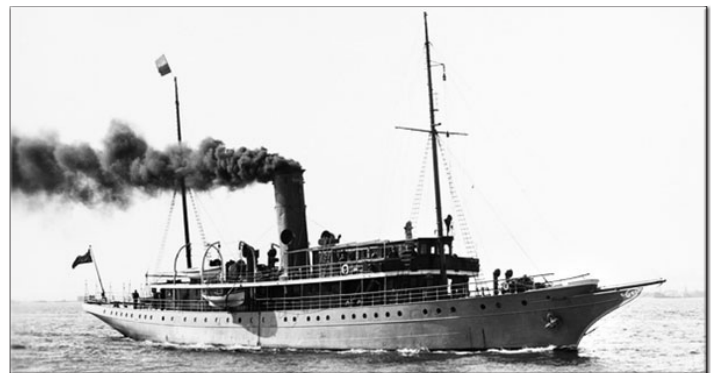
Launched: 6 April 1911

Fate: Captured by *HMAS Nusa*, 11 October 1914

For a period during 1912, the yacht *Komet* was used for mail delivery within the islands on an ad hoc basis. Mail transported on the yacht typically received either a handwritten or handstamped cancellation. These cancellations were unauthorized, and mail containing these markings was sometimes tolerated and at other times rejected by subsequent postal authorities.

Period of Use on this Ship:

- January 1912 to March 1912



*Komet*, while in Australian service as *HMAS Una*

# German New Guinea Deutsch-Neuguinea



## Seepost Postmarks

### Deutsch-Neuguinea Inselfahrt

Catalog:

- Friedemann Unlisted
- ArGe Kolonien RDS Delphin



### *Delphin*

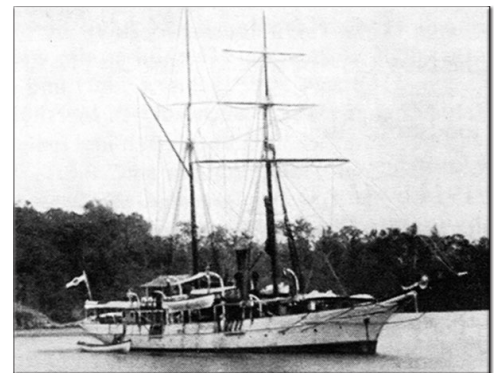
Type: Government steam yacht  
Launched: 1877 as *Sea Queen*  
Fate: Sold to Hong Kong, 1912

For an unknown period, the steam yacht *Delphin* provided transportation for government officials throughout Deutsch-Neuguinea. In the course of these travels, it also carried mail on an ad hoc basis.

Mail transported on the yacht received a handstamped cancellation. These cancellations were unauthorized. The yacht went on to serve in Karolinen, and the cancel is more commonly found on Karolinen stamps.

Period of Use on this Ship:

- Prior to 1903



*Delphin*



# German New Guinea Deutsch-Neuguinea



## Russian Censorship Markings

Д. Ц.

Catalog:

- Friedemann Unlisted
- ArGe Kolonien D.Z. ♦1



Beginning 1 October 1903, some mail collected from Germany's Pacific colonies was transported to Germany via the Trans-Siberian Railway. This routing was permanently terminated upon the outbreak of World War I. In the period immediately prior to the outbreak of World War I, Russia began censoring mail passing via this route.

The most common censorship marking consisted of a handstamped box containing the letters Д. Ц., an abbreviation of Дозволено Цензурой (passed by censor), in red ink.



## Russian Censorship Markings

### 3-Line Signed Censor Mark

ДОЗВОЛЕНО ЦЕНЗУРОМ  
Военный цензор  
Н. Поруцкий.  
*Бабаев*

Catalog:

- Friedemann Unlisted
- ArGe Kolonien DOSWOLENO ZENSUROI... ♦2a

Beginning 1 October 1903, some mail collected from Germany's Pacific colonies was transported to Germany via the Trans-Siberian Railway. This routing was permanently terminated upon the outbreak of World War I. In the period immediately prior to the outbreak of World War I, Russia began censoring mail passing via this route.

This censor mark consisted of 3 lines of text with a signature, Бабаев (Babayev).

# German New Guinea Deutsch-Neuguinea



## Russian Censorship Markings

### 3-Line Signed Censor Mark

ДОЗВОЛЕНО ЦЕНЗУРОЙ  
Воспичи цензур  
Шт.-Нгу.  
*Geiwotschu*

Catalog:

- Friedemann Unlisted
- ArGe Kolonien DOSWOLENO ZENSUROI... ♦2b

Beginning 1 October 1903, some mail collected from Germany's Pacific colonies was transported to Germany via the Trans-Siberian Railway. This routing was permanently terminated upon the outbreak of World War I. In the period immediately prior to the outbreak of World War I, Russia began censoring mail passing via this route.

This censor mark consisted of 3 lines of text with an unidentified signature ("Geivochu" or "Geiwotschu"). At present, this mark is known only on mail from the German Post Offices in China. As mail shipments from German New Guinea and the German Post Offices in China were sometimes transported together along the same route, it is possible that this mark may exist on mail from German New Guinea, but at this time, no such pieces are known.



## German Censorship Markings

### Rabaul Censor Mark

Gouvernementsseitig  
unter **KRIEGSRECHT** geöffnet  
Rabaul , Septemb. 1914.  
Überwachungsoffizier :

Catalog:

- Friedemann: mentioned but not listed
- ArGe Kolonien Gouvernementsseitig unter KRIEGSRECHT...

Upon the outbreak of World War I, some mail departing Rabaul for Germany received a German censor mark. The mark states “Gouvernementsseitig / unter KRIEGSRECHT geoffnet / Rabaul, Septemb. 1914. / Überwachungsoffizier:” (Opened by the government under martial law, Rabaul, September 1914. Censoring officer:) with the name of the reviewing officer.

The mark can be found on civilian mail originating in Rabaul, Herbertshöhe, or Maron, and on Feldpost postcards originating in Rabaul or Herbertshöhe.

# German New Guinea

## Deutsch-Neuguinea



### British Censorship Markings

“Opened By Censor” Tape

**OPENED BY CENSOR** —

Catalog:

- Friedemann Unlisted
- ArGe Kolonien OPENED BY CENSOR

Upon the outbreak of World War I, some civilian mail departing Deutsch-Neuguinea passed through areas under British control. Covers that were opened by British censors were closed with censorship tape stating “OPENED BY CENSOR” in red text on white tape.

German New Guinea  
Deutsch-Neuguinea



German New Guinea  
Deutsch-Neuguinea



Postmarks

German New Guinea  
Deutsch-Neuguinea



Marine-Schiffspost Postmarks



German New Guinea  
Deutsch-Neuguinea



Seepost Postmarks

German New Guinea  
Deutsch-Neuguinea



Seepost Postmarks

German New Guinea  
Deutsch-Neuguinea



Seepost Postmarks

German New Guinea  
Deutsch-Neuguinea



Seepost Postmarks

German New Guinea  
Deutsch-Neuguinea



Seepost Postmarks

German New Guinea  
Deutsch-Neuguinea



Foreign Postmarks